

# MAXIMATOR®

maximum pressure

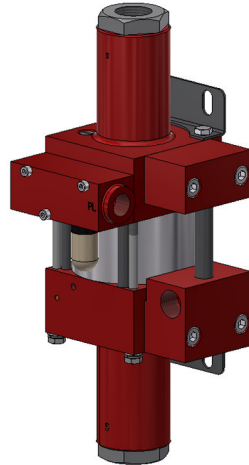
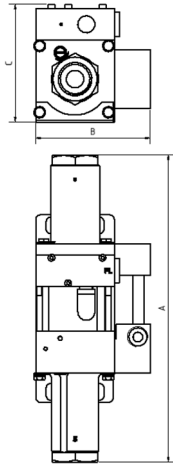
## Technical Data Sheet

M8D

» Oil service

M8DVE

» Water service



M8D  
double acting, single air drive head  
(Standard= Side inlet)

### Technical Data:

Air drive pressure:	1 - 10 bar / 14.5 - 145 psi
Calculated working pressure:	80 bar / 1160 psi
Pressure ratio:	1:8
Displacement volume/double stroke:	29.4 cm <sup>3</sup> / 1.8 cu.inch

### Connections:

Inlet:	Standard: Bottom Inlet 3/4" BSP
Outlet:	1/2" BSP
Air drive:	3/8" BSP
Maximum operating temperature:	60°C
Net weight:	3.7 kg

Pressure and flow performances, please see enclosed graph.

### Wetted materials of construction:

Seal package:	M8D: Polyurethane, NBR M8DVE: UHMWPE, FKM
---------------	--

Pump Body: 3.1645

Piston: 1.4112

Fittings:  
Inlet: 1.4305  
Outlet: 3.1645

### Approximate Dimensions:

A: 300 mm

B: 117 mm

C: 120 mm

### Available Options:

Seal material for oil service: M8D

Seal material for water service: M8DVE

Liquid inlet: Standard: bottom inlet, side inlet not available

Special inlet and outlet ports, i.e. NPT: M8D-NPT  
M8DVE-NPT

Special seal material to handle special fluids on request.

### Available Accessories:

Air control units for M series with filter pressure regulator, control pressure gauge and shut off valve: M8D with C1

To protect the pump against excessive outlet pressures or to limit the outlet pressure, a safety valve can be fitted to the air control unit in the air drive line. M8D with C1/SV-air (The required outlet pressure has to be indicated.)

**Please consult factory for more information.** All technical and dimensional information subject to change. All General Terms and Conditions of sale, including limitations of our liability, apply to all products and services sold.

## Leistungsdiagramm/Performance Graph M 8 D

Prüfflüssigkeit/Test Liquid: Wasser-Öl-Emulsion/Water Oil Emulsion ca. 1 - 10 cst

