

# MAXIMATOR®

maximum pressure

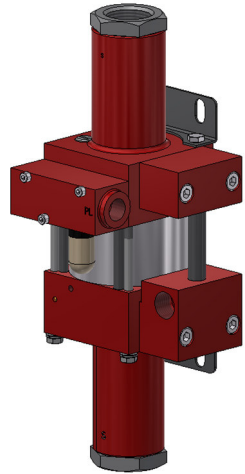
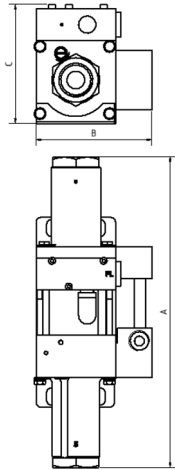
## Technical Data Sheet

M4D

» Oil service

M4DVE

» Water service



M4D  
double acting, single air drive head  
(Standard= Side inlet)

### Technical Data:

Air drive pressure:	1 - 10 bar / 14.5 - 145 psi
Calculated working pressure:	40 bar / 580 psi
Pressure ratio:	1:4
Displacement volume/double stroke:	61 cm <sup>3</sup> / 3.7 cu.inch

### Connections:

Inlet:	Standard: Bottom Inlet 1" BSP
Outlet:	1/2" BSP
Air drive:	3/8" BSP
Maximum operating temperature:	60°C
Net weight:	4.7 kg

Pressure and flow performances, please see enclosed graph.

### Wetted materials of construction:

Seal package:	M4D: Polyurethane, NBR M4DVE: UHMWPE, FKM
Pump Body:	3.1645
Piston:	1.4112
Fittings	Inlet: 1.4305 Outlet: 3.1645

### Approximate Dimensions:

A:	314 mm
B:	117 mm
C:	120 mm

### Available Options:

Seal material for oil service:	M4D
Seal material for water service:	M4DVE
Liquid inlet:	Standard: bottom inlet, side inlet not available
Special inlet and outlet ports, i.e. NPT:	M4D-NPT M4DVE-NPT
Special seal material to handle special fluids on request.	

### Available Accessories:

Air control units for M series with filter pressure regulator, control pressure gauge and shut off valve:	M4D with C1
To protect the pump against excessive outlet pressures or to limit the outlet pressure, a safety valve can be fitted to the air control unit in the air drive line.	M4D with C1/SV-air (The required outlet pressure has to be indicated.)

Please consult factory for more information. All technical and dimensional information subject to change. All General Terms and Conditions of sale, including limitations of our liability, apply to all products and services sold.

## Leistungsdiagramm/Performance Graph M 4 D

Prüfflüssigkeit/Test Liquid: Wasser-Öl-Emulsion/Water Oil Emulsion ca. 1 - 10 cst

