

## Relief Valves

Pressures to 65,000 psi (4,500 bar)

### Relief Valves

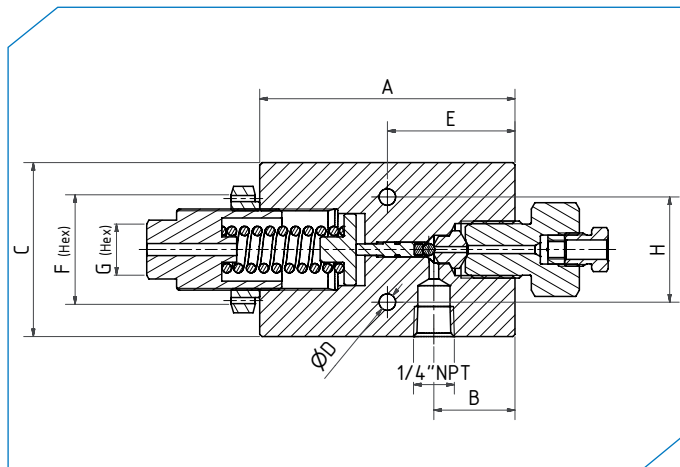
**MAXIMATOR** High Pressure Relief Valves with metal seat provide reliable venting of liquids for set pressure from 14,500 psi (**1,000 bar**) up to 65,000 psi (**4,500 bar**). The relief valves are intended to be used as adjustable pressure limiters in high pressure systems and are specially recommended for applications with intense variations of flow. All relief valves have a 1/4" NPT relief connection, are equipped with a replaceable seat and come with glands and collars.

#### Materials:

Body, double cone: 316 stainless steel

Spring: 300 series stainless steel

O-ring: Viton "A" [-4°F to 392°F (-20°C to 200°C)]



Catalog Number	Pressure Rating psi (bar)	Pressure Range min./max. psi (bar)	Orifice in. (mm)	Connection Typ	Dimensions in. (mm)								Block thick- ness
					A	B	C	D	E	F (Hex)	G (Hex)	H	

Relief Valves													
36RV4H	36,000 (2,500)	14,500 / 36,000 (1,000 / 2,500)	0.08 (2.0)	4H	3.35 (85)	3.35 (85)	3.35 (85)	0.28 (5.5)	1.67 (42.5)	1.44 (36.5)	0.67 (17)	1.38 (35)	1.26 (32)
36RV6H	36,000 (2,500)	14,500 / 36,000 (1,000 / 2,500)	0.08 (2.0)	6H	3.35 (85)	3.35 (85)	3.35 (85)	0.28 (5.5)	1.67 (42.5)	1.44 (36.5)	0.67 (17)	1.38 (35)	1.26 (32)
65RV4H	65,000 (4,500)	29,000 / 65,000 (2,000 / 4,500)	0.06 (1.5)	4H	3.35 (85)	3.35 (85)	3.35 (85)	0.28 (5.5)	1.67 (42.5)	1.44 (36.5)	0.67 (17)	1.38 (35)	1.26 (32)
65RV6H	65,000 (4,500)	29,000 / 65,000 (2,000 / 4,500)	0.06 (1.5)	6H	3.35 (85)	3.35 (85)	3.35 (85)	0.28 (5.5)	1.67 (42.5)	1.44 (36.5)	0.67 (17)	1.38 (35)	1.26 (32)

All dimensions for reference only and are subject to change.