

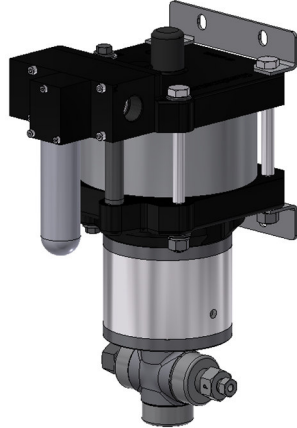
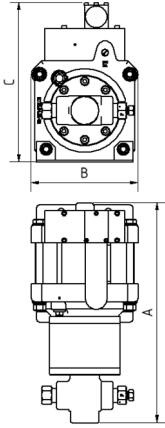
# MAXIMATOR®

maximum pressure

## Technical Data Sheet

G500 (L)S

» Oil and Water service



G500 (L)S  
single acting, single air drive head, side inlet  
(Bottom inlet not available)

### Technical Data:

Air drive pressure:	1 - 10 bar / 14.5 - 145 psi
Calculated working pressure:	4500 bar / 65250 psi
Pressure ratio:	1:519
Displacement volume/double stroke:	1.9 cm <sup>3</sup> / 0.12 cu.inch

### Connections:

Inlet:	1/4" BSP
Outlet:	9/16-18UNF
Air drive:	3/4" BSP
Maximum operating temperature:	60°C
Net weight:	13.5 kg

Pressure and flow performances, please see enclosed graph.

### Wetted materials of construction:

Seal package:	G500(L)S: Polyurethane
Pump Body:	1.4313
Piston:	Hard metal
Fittings:	1.4542

### Approximate Dimensions:

A:	372 mm
B:	181 mm
C:	272 mm

### Available Options:

Special inlet and outlet ports, i.e. NPT:	G500(L)S-NPT
Special seal material to handle special fluids on request.	

### Available Accessories:

Air control units with filter pressure regulator, control pressure gauge and shut off valve:	G500(L) with C2
To protect the pump against excessive outlet pressures or to limit the outlet pressure, a safety valve can be fitted to the air control unit in the air drive line.	G500(L) with C2/SV-air (The required outlet pressure has to be indicated.)

**Please consult factory for more information.** All technical and dimensional information subject to change. All General Terms and Conditions of sale, including limitations of our liability, apply to all products and services sold.

## Leistungsdiagramm/Performance Graph G 500

Prüfflüssigkeit/Test Liquid: Wasser-Öl-Emulsion/Water Oil Emulsion ca. 1 - 10 cst

