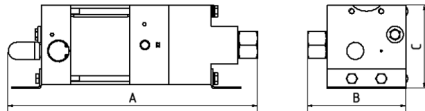
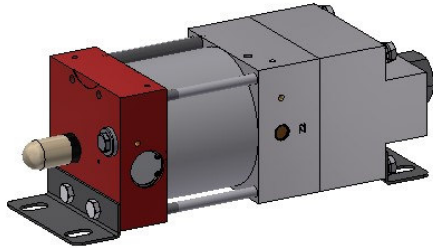




Technical Data Sheet

Liquified Gas Pump

MLGP 7-NBR



Technical Data:

Air drive pressure:	1 - 10 bar / 14.5 - 145 psi
Min. inlet pressure pA:	-0.8 bar / -11.6 psi
Max. outlet pressure pB:	70 bar / 1015 psi
Pressure ratio:	1:7
Displacement volume/double stroke:	15 cm ³ / 0.92 cu.inch

Connections:

Inlet:	1/4" BSP
Outlet:	1/4" BSP
Air drive:	3/8" BSP
Maximum operating temperature:	-20 °C - +60 °C
Net weight:	3.3 kg

Pressure and flow performances, please see enclosed graph.

Wetted materials of construction:

Seal package:	PTFE, NBR
Pump head:	3.1645
Cylinder liner:	1.4542
Piston:	3.1645
Fittings:	1.4404
Balls	1.4034
Springs	1.4310

Approximate Dimensions:

A:	254 mm
B:	100 mm
C:	84 mm

Available Options:

FEC:	For extreme cycling
LT:	Low Temperature
LTA:	Low Temperature Ambient
Special sealing materials on request	

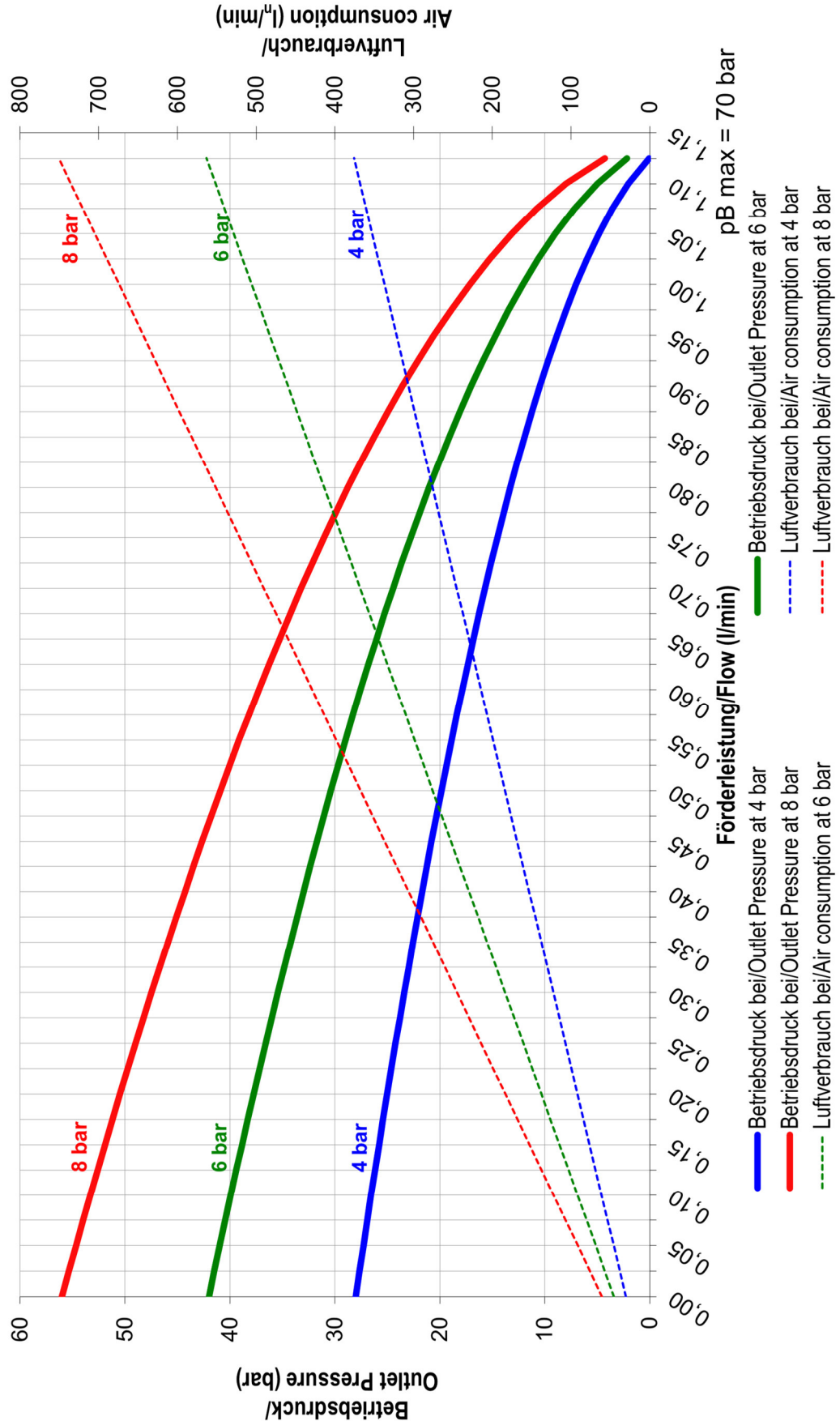
Please consult factory for more information. All technical and dimensional information subject to change. All General Terms and Conditions of sale, including limitations of our liability, apply to all products and services sold.



Performance Graph for liquid fluids

Leistungsdiagramm/Performance Graph MLGP 7

Prüfflüssigkeit/Test fluid: Wasser-Öl-Emulsion/Water Oil Emulsion ca. 1 - 10 cst





Performance Graph for gaseous fluids

