

LM 5000 G400



Power Pack Type LM5000 G400

- **Working pressure up to 4,000 bar**
- **3.1 calibrated gauges and transducers**
- **Operating medium water**
- **Extensive range of accessories, also prepared for pressure recording**
- **Stable flight case for safe transport**

The MAXIMATOR Power Pack Type LM5000 G400 is designed for mobile pressure generation of up to 4,000 bar.

Accessories include a 5 litre stainless steel canister, adapters and a pressure transducer.

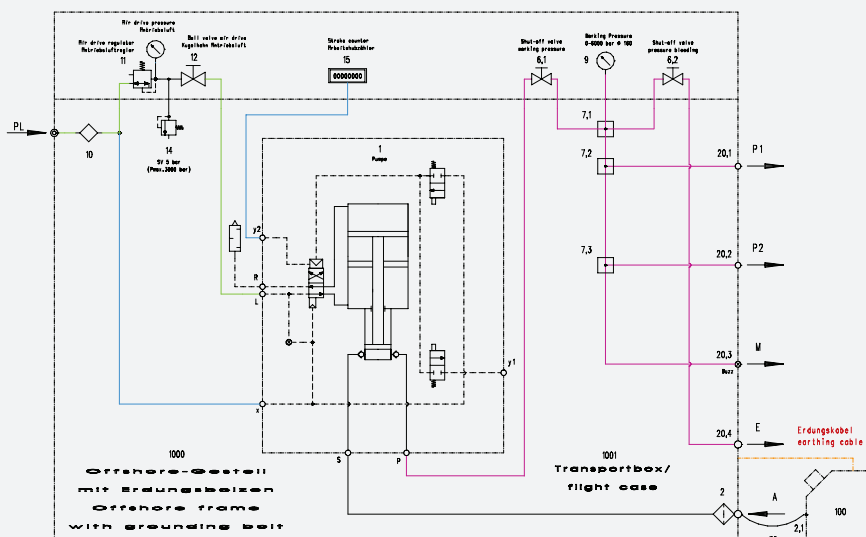


Technical Data

Type:	LM5000-G400-2LVE-ATEX
Order Code:	3320.1110
Pressure Ratio:	1 : 796
Working Pressure max.:	approx. 4,000 bar
Operating Media:	Water *
Flow Capacity max.:	depending on application
Connection Pressure Inlet PL/A:	1/2" BSPP / 1/2"(f) BSPP
Connection Pressure Outlet P1-P2:	4H (9/16-18 UNF)
Air Drive Pressure:	min. 1 bar / max. 8,5 bar
Dimensions W x D x H:	910 x 400 x 470 mm
Dimensions Case W x D x H:	1030 x 620 x 720 mm
Weight:	33 kg
Weight incl. Case:	91 kg

*other operating media on request

P & ID



Pos. Description

- 1 G 400-2LVE-4H
- 2 Suction Filter 1/2"f BSPP
- 6 2-Way Angle Valve 65000psi 1/4"
- 7 Cross 4M / T-Piece 4M
- 9 Pressure Gauge 0-6000 bar ø160mm
- 10 Filter 1/2" BSPP
- 11 Regulator 1/2"f BSPP
- 12 Shut off valve 1/2" BSPP
- 14 Safety valve 1/2"
- 15 Stroke counter
- 20 Bulkhead coupling 65000psi 1/4"
- 30 Hose 1500 mm
- 100 Stainless Steel Can 5L
- 1000 Offshore frame
- 1001 Flight Case

LM 5000 G400

Scope of Supply



Power Pack LM 5000 G400

Accessories

Flightcase

Stainless Steel Tray and
Stainless Steel Can 5 L

Accessories



Pressure Transducer 0-5000 bar,
0-10V *

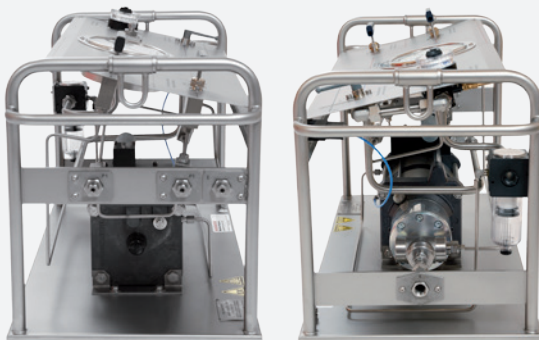
Cable Connection 3000 mm

High Pressure Plug Type 65P4H

Adapter :

- 4H(a)->1/2"(f) BSPP;
- 4H(a)->FNPT1/2";
- 4H(a)->1/4"(f) BSPP;
- 4H(a)->FNPT1/4"

Connections



Air Drive Inlet: 1/2" BSPP

Pressure Outlet P1/P2:
4H (9/16-18 UNF)

Measurement Connection:
4H (9/16-18 UNF)

Fluid Inlet: 1/2"(f) BSPP

Pressure Releas: 4H (9/16-18 UNF)

*not to be used in explosion areas

Performance Graph High Pressure Pump Type G400-2

Leistungsdiagramm/Performance Graph G 400 -2L

Prüfflüssigkeit/Test Liquid: Wasser-Öl-Emulsion/Water Oil Emulsion ca. 1 - 10 cst

