

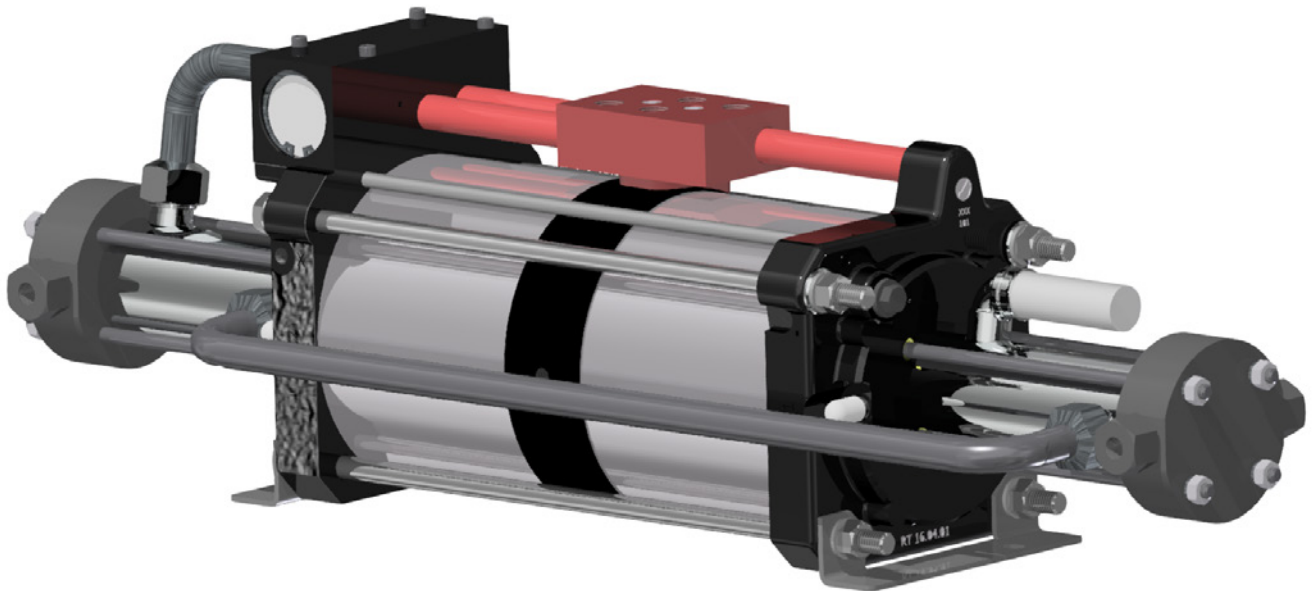
# MAXIMATOR®

## Maximum Pressure.

High Pressure Technology • Testing Equipment  
Hydraulics • Pneumatics

## Flex Drive - Drive modification for efficient filling processes

### DLE ... -2-FLEX



release 10 / 2020 • MAXIMATOR • product information FLEX DRIVE DLE... -2-FLEX

#### Application

The modification is applicable for all MAXIMATOR gas booster with 2 air drive section. The following application are most common:

- filling processes
- testing processes
- transfer processes
- emptying processes

Best results are reached by using combined compressors. Minimum inlet pressure need to be chosen from single stage compressors to realize stable pressurization.

#### Options / Advantages

##### Options:

- manual - switching style via manual hand valves after reaching stall pressure
- pneumatic - switching done by pneumatic actuated valves and a pressure switch
- electric - switching done by solenoid valves, pressure transducer and master PLC

##### Advantages:

- up to 40 % savings of shop air
- up to 20 % time savings
- easy to modify existing units

Please consult factory for more information. All technical and dimensional information subject to change. All General Terms and Conditions of sale, including limitations of our liability, apply to all products and services sold.

# MAXIMATOR®

## Maximum Pressure.



### Technical Data

Storage filling from 30 bar to 400 bar target pressure with one DLE 30-75-2

storage volume	shop air savings	filling time savings
3 Liter	32 %	22 %
20 Liter	34 %	23 %
50 Liter	36 %	24 %

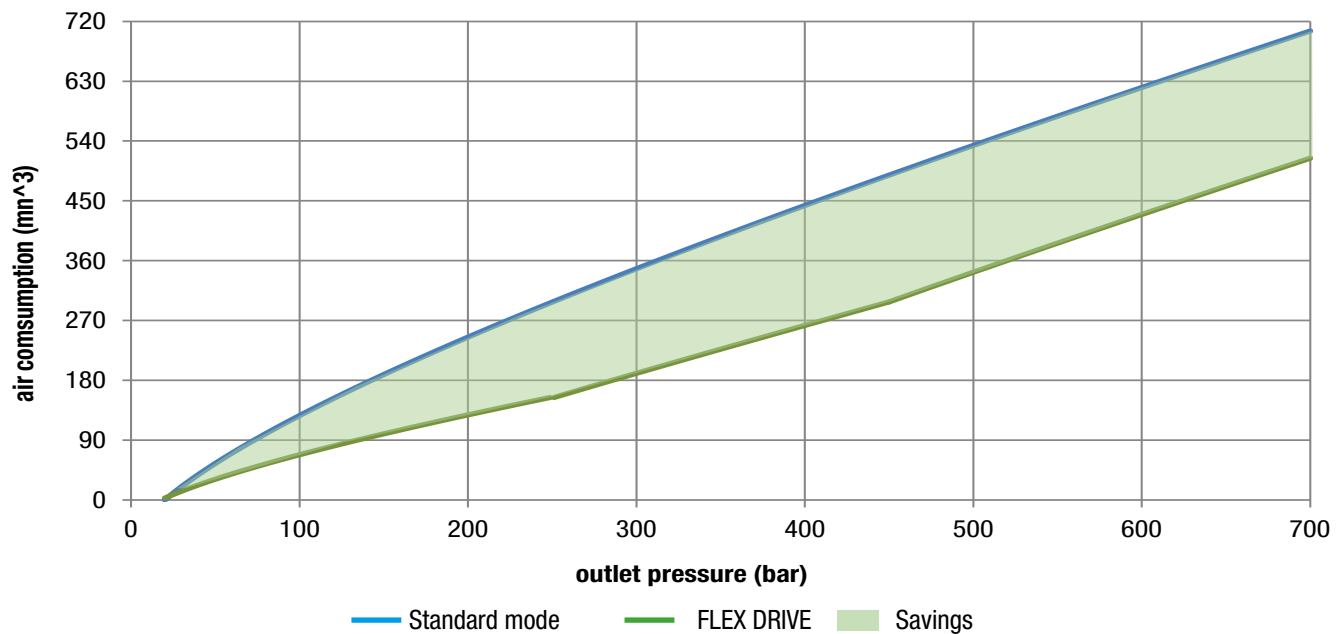
Storage filling from 30 bar to 250 bar target pressure with one DLE 30-2

3 Liter	20 %	4 %
20 Liter	22 %	4 %
50 Liter	38 %	4 %

Storage filling from 40 bar to 700 bar with compressor combination 2x DLE30-2 / 2x DLE75-2

120 Liter	27 %	7 %
-----------	------	-----

### Performance diagram



Please consult factory for more information. All technical and dimensional information subject to change. All General Terms and Conditions of sale, including limitations of our liability, apply to all products and services sold.