

MAXIMATOR[®]
maximum pressure



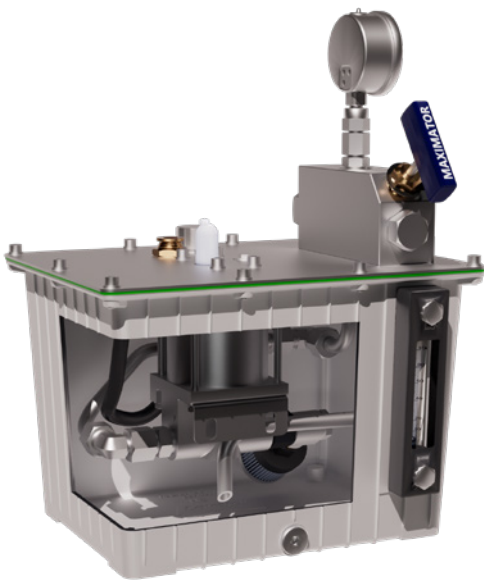
Hydroline EASY

Configuration instead of Engineering

The modular hydraulic line of compact units up to 4,000 bar

Hydroline EASY

Hydroline EasyX consistently focuses on configuration instead of complex engineering. A pneumatically driven system that operates without electrical connections, significantly simplifying installation, operation, and safety. The modular platform enables true, precise configurability for the first time – users assemble their unit from clearly defined modules, exactly according to their requirements. From a limited number of perfectly matched building blocks, the result is a solution that fits the application precisely: flexible, efficient, and fast to deliver.



In addition to configurability, users naturally benefit from all the proven advantages of Maximator's pneumatic high-pressure technology: automatic pressure shut-off, energy-efficient pressure holding, and reliable pressure boosting in case of pressure drop – ideal for safe, simple, and long-lasting operation.

Hydroline EasyX represents a clear shift: away from individual special designs and toward a modern, modular, configurable hydraulic unit that is reliable, efficient, and predictable – offering less effort in procurement, increased safety, and maximum efficiency.

One system. Many possibilities. Maximum efficiency.



Configuration instead of Engineering

Validated and qualified modules replace individual custom-designed solutions.



Only compressed air. Nothing else.

No electricity, high safety, energy-efficient operation.



High configuration diversity

Application-specific solutions – configured quickly and precisely.



Efficient hydraulics

Optimized flow paths for maximum performance and reliability.



Short delivery times

The modular design reduces complexity and accelerates availability.



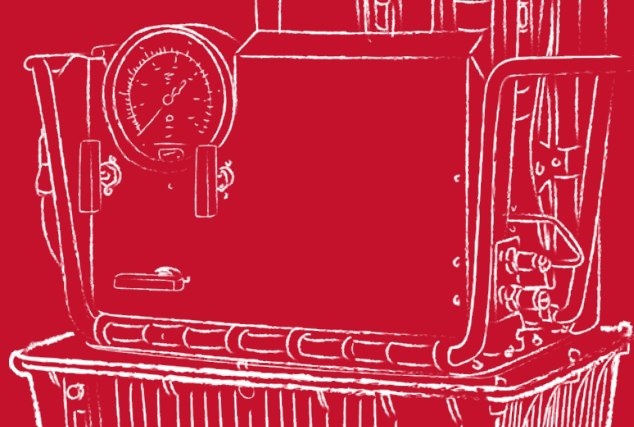
Easy Service

Standardized components and high spare parts availability ensure fast response times.



Reduced maintenance effort

Service-friendly design with optimal accessibility and clearly structured documentation.



Technical Information

- Working pressure up to 4,000 bar, maximum operating pressure up to 4,396 bar, depending on pump and module configuration
- Pneumatically or nitrogen-driven (3–10 bar drive pressure), no electrical connection required
- Designed for oil and water applications with various tank volumes (12 L, 44 L, 70 L), according to nameplate and defined module configuration
- Operating temperature range from –10 to +60 °C for standard industrial applications
- Intended for stationary operation in weather-protected indoor areas
- Available as complete machine (CM) or partly completed machine (PCM) in accordance with the Machinery Directive
- Modular system with clearly defined interfaces
- Automatic pump shut-off at final pressure, automatic restart in case of pressure drop
- ATEX version 2G / 3G, equipment group IIB (configuration-dependent)
- Max. flow rate: 18.35 l/min

Customized Solutions. Implemented Modularly.

The modular Hydroline EasyX system enables individual configurations for a wide range of requirements.



All technical and dimensional data is provided for information purposes only and is subject to change. The general terms and conditions of sale, including limitations of liability, apply to all products and services sold.

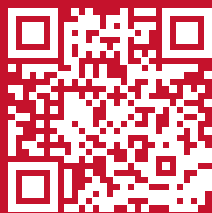
The Modular Path to the right High-Pressure Solution

Hydroline EasyX is the new generation of pneumatically driven high-pressure hydraulics.

The modular system eliminates the need for electrical connections and significantly simplifies installation, operation, and service.

Using clearly defined modules, users configure their hydraulic unit for oil or water applications exactly to their needs – flexible, efficient, and ready for immediate use.

Configuration instead of engineering – for increased safety and maximum availability.



Visit www.maximator.de

MAXIMATOR GmbH

Lange Strasse 6, 99734 Nordhausen,
Germany
Telephone +49 3631 9533 0
info@maximator.de
www.maximator.de

A COMPANY OF



**SCHMIDT
KRANZ GROUP**

04 /2026 | 1000053607