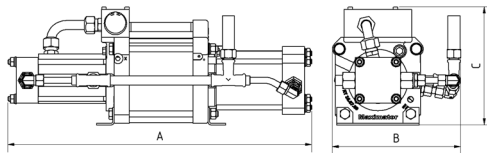
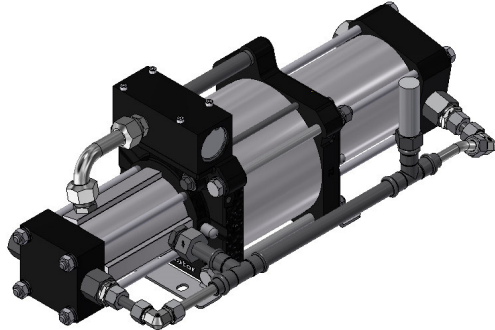




### Technical Data Sheet

### Gas booster DLE 2-5



DLE 2-5  
single acting, single air drive head  
single stage

#### Technical Data:

Air drive pressure pL:	1 - 10 bar / 14.5 - 145 psi
Pressure ratio i:	1:2 / 1:5
Compression ratio:	1:25
Stage pressure ratio:	1:2.5
Minimum suction pressure pA:	0
Maximum suction pressure pA:	0.8* air drive pressure
Maximum outlet pressure pB:	70 bar
Displacement volume/double stroke:	922 cm <sup>3</sup>
Maximum cycles:	100 / min
Stall pressure:	$pB = 5 * pL + 5/2 * pA$

#### Standard Connections:

Air drive:	3/4" BSP
DLE 2-5 (-GG):	Inlet / Outlet: 1/2" BSP
Maximum operating temperature:	60°C
Net weight:	20 kg

Pressure and flow performances, please see enclosed graph.

#### Materials of construction hp section DLE 2-5:

Standard seal package:	PTFE, FKM
Compressor head:	3.1645
HP cylinder:	3.3206
HP piston:	DLE2: 1.4404 DLE5: 1.4305
Fittings:	1.4404
Balls:	1.4034
Springs:	1.4310

#### Approximate Dimensions:

A:	605 mm
B:	256 mm
C:	233 mm

#### Available Options:

Inert gas service (standard):	DLE 2-5 (-GG)
Oxygen service:	DLE 2-5-GG-S
CO <sub>2</sub> service:	DLE 2-5-GG-C
In-/Outlet: 1" NPT / 3/8" NPT	DLE 2-5-NN

#### Available Accessories:

Air control units with filter pressure regulator, control pressure gauge and shut off valve:	DLE 2-5 with C2
To protect the booster against excessive outlet pressures or to limit the outlet pressure, a safety valve can be fitted to the air control unit in the air drive line:	DLE 2-5 with C2 / SV-air (The required outlet pressure has to be indicated.)

Please consult factory for more information. All technical and dimensional information subject to change. All General Terms and Conditions of sale, including limitations of our liability, apply to all products and services sold.

