

Air Amplifier Station Type GPLV5/40L/40bar

Order code: 3230.1172
Circuit diagramm no. : AP 201.206.23

Characteristic feature:

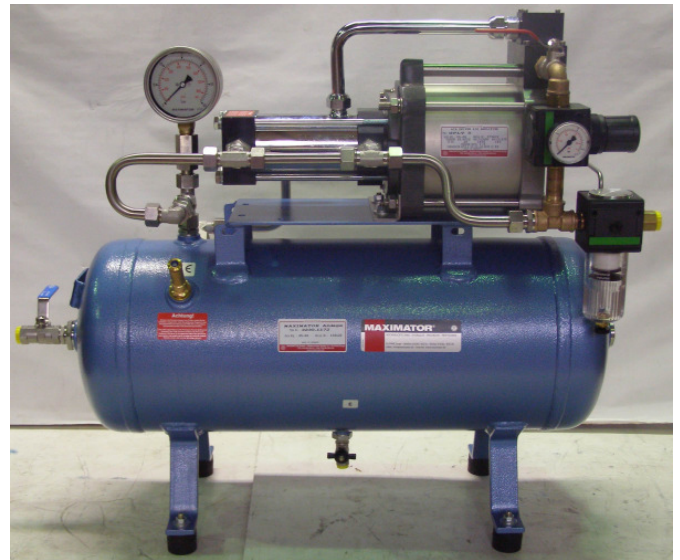
- easy to operate
- compact construction style
- stationary
- pneumatic drive
- no heat, flame or spark risk

Applications:

The **MAXIMATOR** - Amplifier station will be used for compressing of air or other gases.

Function:

MAXIMATOR compressor stations are driven by air pressure and increase the pressure in the legacy high pressure system according the compressor ratio (see opposite table).



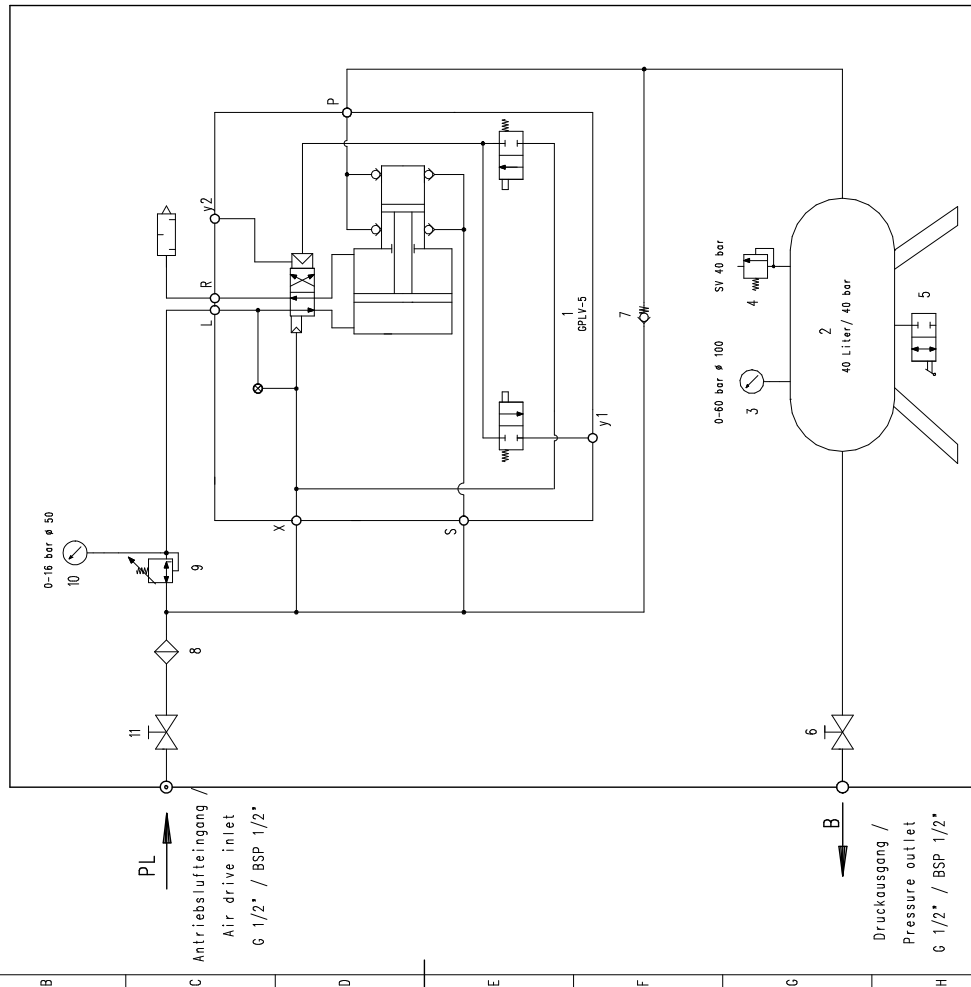
Technical Data

Type:	GPLV5/40Liter/40bar
Pressure ratio:	1:5
Outlet Pressure max.:	40 bar
Utilities:	Air
Flow max.:	depending on application
Connection Inlet PL	BSP 1/2"
Connection Outlet B:	BSP 1/2"
Dimension W x T x H:	870 x 390 x 730
Weight:	60,5 kg
Air drive pressure	min. 1 bar / max. 8 bar

MAXIMATOR-Druckluftverstärkerstation / Air amplifier station

GPLV-5 / 40 Liter / 40 bar

Anlagen-Nr. / Station-no.: 130699



Pos	Menge	Benennung	Sr.-Nr.	3	4	5	6
1	1	MAXIMATOR-Kompressor	Sr.-Nr. 377138		Booster	3210.0727	GPLV-5
2	1	Druckluftbehälter mit 100 l (V.Nr. 15)			Accumulator	3300.3971	40 Liter / 40 bar
3	1	Druckregler G 1/2"			Pressure regulator	3616.0704	VP 54.01.22.01
4	1	Sicherheitsventil 40 bar			Shut off valve	3620.3888	SV 40
5	1	Speicherbehälter G 1/2"			Shut off valve	3300.3897	SV 40 / 2"
6	1	Kugelhahn G 1/2" VA			Ball off valve	3503.0863	B-4414
7	1	Rückschlagventil VA			Return valve	3300.2103	RHD15L-71
8	1	Filter G 1/2"			Filter	3616.0705	VP 54.01.22.02
9	1	Druckregler G 1/2"			Pressure regulator	3616.0704	VP 54.01.22.01
10	1	Manometer 0-16 bar # 50			Gauge 0-16 bar # 50	3630.0113	VP 16.01.12
11	1	Kugelhahn G 1/2"-1 (kurz)			Shut off valve	3620.0862	VP 15.11.21

MAXIMATOR®
 MAXIMATOR GmbH
 D-99734 Nordhausen / D-37449 Zorge

Bei Max. ohne Verzinsung:
 Liefer- und Abnahme nach DIN ISO 2768-m
 Abmessungen für Form- und Lage nach DIN ISO 2768-k
 Maßabweichungen ohne Angabe nach DIN 9134

Kunde: Eisenberger GmbH
 D-36683 Billenbürg

Bestell-Nr.: 3230.1172
Artikel-Nr.: 3230.1172

Erstellt durch: AP 201.206.23