

# MAXIMATOR®

## Maximum Pressure.



High Pressure Technology • Testing Equipment  
Hydraulics • Pneumatics

### Technical Data Sheet

### Oxygen booster SDLE-20-1-GG-S



DLE 15  
single acting, without air returnment  
single stage

#### Technical Data:

Air drive pressure pL:	1-10 bar / 14,5 - 145psi
Pressure ratio i:	1:20
Compression ratio	1:26
Minimum suction pressure pA:	15 bar
Maximum suction pressure pA:	200 bar
Maximum outlet pressure pB:	240 bar
Displacement volume:	60 cm <sup>3</sup> / 3,6 cu.inch
Maximum cycles:	150 / min
Stall pressure:	PB = i * pL

#### Standard Connections:

Air drive:	1/2" BSP
Inlet/Outlet:	1/4" BSP
Maximum operating temperature	100°C
Net weight:	20 kg

Pressure and flow performances, please see enclosed graph.

#### Materials of construction hp section :

Standard seal package:	PTFE, NBR, Viton
Compressor head:	1.4305
HP cylinder:	1.4542
HP piston:	1.4305
Fittings:	1.4305
Balls:	Al <sub>2</sub> O <sub>3</sub>
Springs:	1.4310

#### Approximate Dimensions:

Length:	439 mm
Width:	135 mm
Height:	175 mm

#### Available Accessories:

Air control units with filter pressure regulator, control pressure gauge and shut off valve:	SDLE-20-1-GG-S with C2
To protect the booster against excessive outlet pressures or to limit the outlet pressure, a safety valve can be fitted to the air control unit in the air drive line:	SDLE-20-1-GG-S with C2/ SVair (The required outlet pressure has to be indicated.)

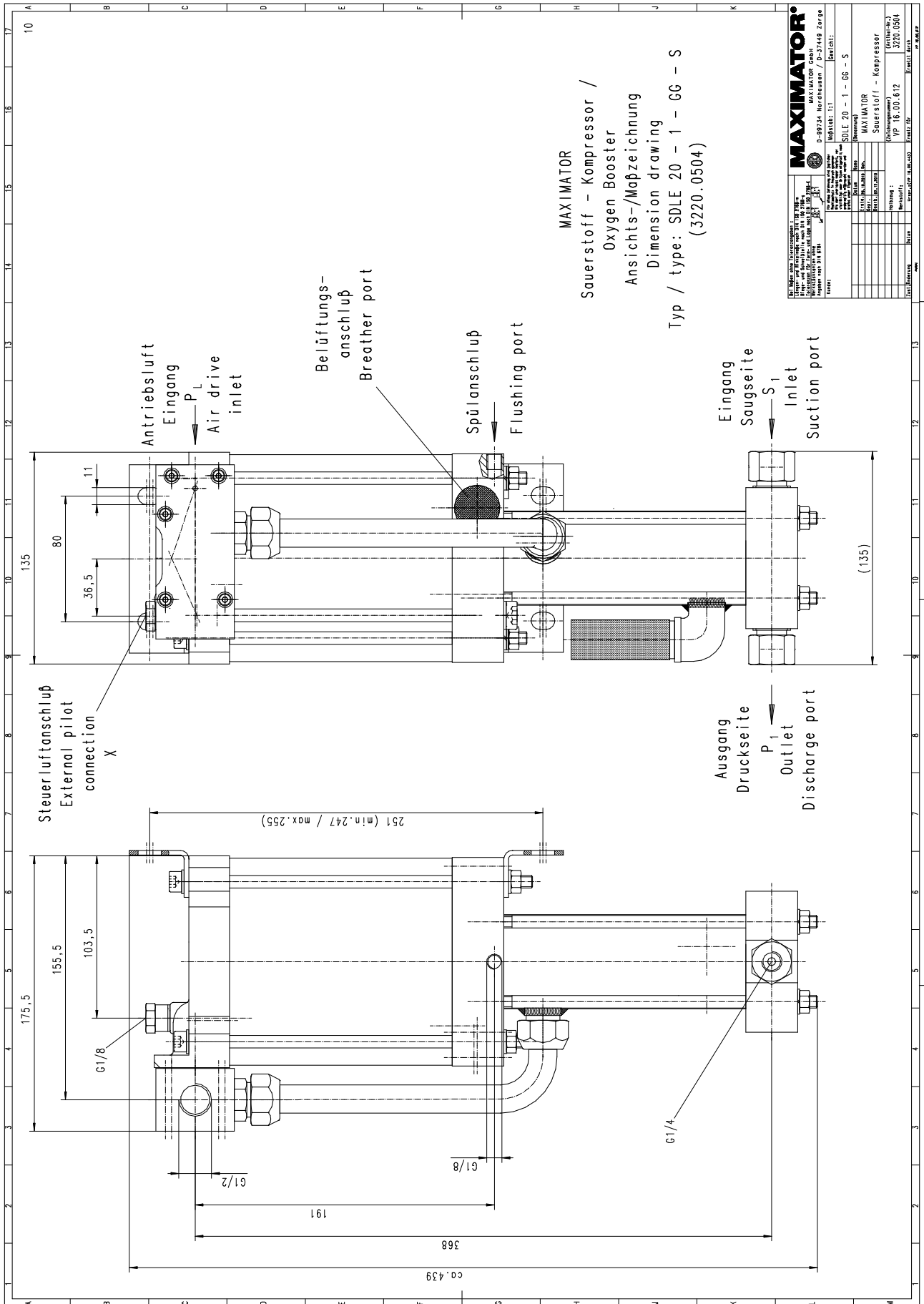
**Please consult factory for more information.** All technical and dimensional information subject to change. All General Terms and Conditions of sale, including limitations of our liability, apply to all products and services sold.

# MAXIMATOR®

## Maximum Pressure.



High Pressure Technology • Testing Equipment  
Hydraulics • Pneumatics



# MAXIMATOR®

## Maximum Pressure.



High Pressure Technology • Testing Equipment  
Hydraulics • Pneumatics

