

MAXIMATOR®

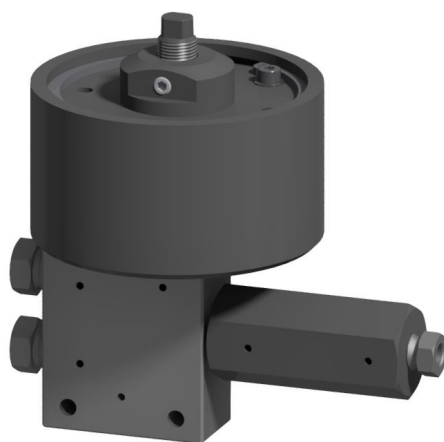
Maximum Pressure.



High Pressure Technology • Testing Equipment
Hydraulics • Pneumatics

Technical Data Sheet

4-Way Air Actuated H2-Valve for Dispenser Includes Adjustable Stroke and Check Valve



Technical Data

Operating temperature:	-40°C / +85°C
Drive pressure:	58 psi-116 psi (4 bar-8 bar)
Operating pressure:	15200 psi (1050 bar)
Net weight:	2,9 kg

Materials:

Valve body:	1.4404
Valve stem:	1.4980
Seal needle valve:	UHMWPE
Seal check valve:	PEEK

Dimensions:

Height:	133 mm
Diameter:	90 mm
Orifice:	2,0 mm

Actuator:	3MNO
------------------	------

Item Code: 3780.0868

Pressure	Component Type	Connection Size & Type	Stem Type	Body pattern	Configuration
15200 psi (1050 bar)	Valve	Refer to drawing for information	Vee Stem with adjustable stroke	4-Way valve	Compact air drive, normally open

Characteristics

- Valve to be used for pressure release of filling line
- Double porting on left hand side eliminates need for Tee fitting
- Bottom port to be used for protection with rupture disk
- Outlet check valve installed in order to prevent contamination
- Adjustable stroke for on-site adjustment regarding noise
- High leak integrity and compact integrated design
- Low wear because of optimal materials of construction
- Weep holes on connections for maximum safety



The valves are marked with an EX sign and are in conformity to Group II Category 2G/2D Explosion group IIC constructive safety.

Please consult factory for more information. All technical and dimensional information subject to change. All General Terms and Conditions of sale, including limitations of our liability, apply to all products and services sold.

MAXIMATOR®

Maximum Pressure.



High Pressure Technology • Testing Equipment
Hydraulics • Pneumatics

3780.0498:

