

## Relief Valves

Pressures to 22,500 psi (1,550 bar)

### Relief Valves

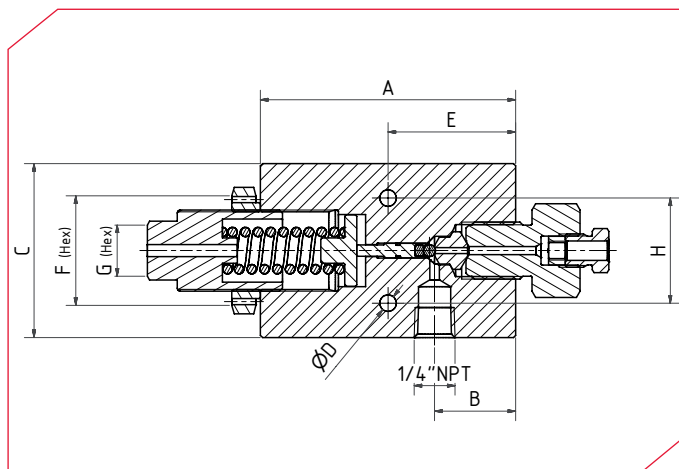
**MAXIMATOR** Medium Pressure Relief Valves with metal seat provide reliable venting of liquids for set pressure from 4,350 psi (**300 bar**) up to 22,500 psi (**1,550 bar**). The relief valves are intended to be used as adjustable pressure limiters in high pressure systems and are specially recommended for applications with intense variations of flow. All relief valves have a 1/4" NPT relief connection, are equipped with a replaceable seat and come with glands and collars.

#### Materials:

Body, double cone: 316 stainless steel

Spring: 300 series stainless steel

O-ring: Viton "A" [-4°F to 392°F (-20°C to 200°C)]



| Catalog Number | Pressure Rating<br>psi (bar) | Pressure Range<br>min./max.<br>psi (bar) | Orifice<br>in.<br>(mm) | Connection<br>Typ | Dimensions in. (mm) |   |   |   |   |            |            |   | Block thick-<br>ness |
|----------------|------------------------------|--|------------------------|-------------------|---------------------|---|---|---|---|------------|------------|---|----------------------|
|                |                              |  |                        |                   | A                   | B | C | D | E | F<br>(Hex) | G<br>(Hex) | H |                      |

| Relief Valves |                   |                                    |               |    |              |              |              |               |                |                |              |              |              |
|---------------|-------------------|------------------------------------|---------------|----|--------------|--------------|--------------|---------------|----------------|----------------|--------------|--------------|--------------|
| 17RV4M        | 17,000<br>(1,200) | 4,350 / 17,000<br>(300 / 1,200)    | 0.08<br>(2.0) | 4M | 3.35<br>(85) | 3.35<br>(85) | 3.35<br>(85) | 0.28<br>(5.5) | 1.67<br>(42.5) | 1.44<br>(36.5) | 0.67<br>(17) | 1.38<br>(35) | 1.26<br>(32) |
| 17RV6M        | 17,000<br>(1,200) | 4,350 / 17,000<br>(300 / 1,200)    | 0.08<br>(2.0) | 6M | 3.35<br>(85) | 3.35<br>(85) | 3.35<br>(85) | 0.28<br>(5.5) | 1.67<br>(42.5) | 1.44<br>(36.5) | 0.67<br>(17) | 1.38<br>(35) | 1.26<br>(32) |
| 21RV4M        | 22,500<br>(1,550) | 14,500 / 22,500<br>(1,000 / 1,550) | 0.08<br>(2.0) | 4M | 3.35<br>(85) | 3.35<br>(85) | 3.35<br>(85) | 0.28<br>(5.5) | 1.67<br>(42.5) | 1.44<br>(36.5) | 0.67<br>(17) | 1.38<br>(35) | 1.26<br>(32) |
| 21RV6M        | 22,500<br>(1,550) | 14,500 / 22,500<br>(1,000 / 1,550) | 0.08<br>(2.0) | 6M | 3.35<br>(85) | 3.35<br>(85) | 3.35<br>(85) | 0.28<br>(5.5) | 1.67<br>(42.5) | 1.44<br>(36.5) | 0.67<br>(17) | 1.38<br>(35) | 1.26<br>(32) |

All dimensions for reference only and are subject to change.