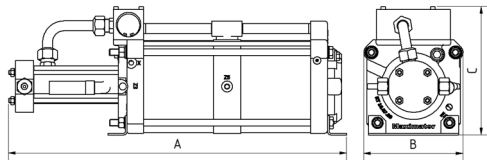
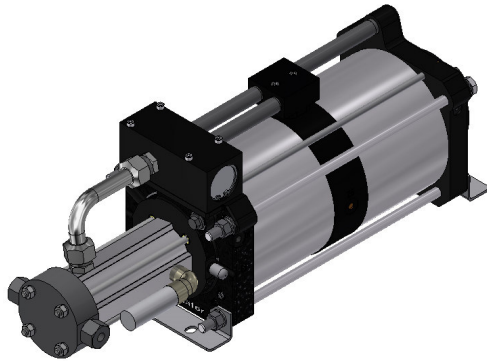




Technical Data Sheet

Gas booster DLE 30-1-2



DLE 30-1-2
single acting, single air drive head
single stage

Technical Data:

Air drive pressure pL:	1 - 10 bar / 14.5 - 145 psi
Pressure ratio i:	1:60
Compression ratio:	1:20
Minimum suction pressure pA:	20
Maximum suction pressure pA:	600 bar
Maximum outlet pressure pB:	600 bar
Displacement volume/double stroke:	60 cm ³
Maximum cycles:	120 / min
Stall pressure:	$pB = i * pL$

Standard Connections:

Air drive:	3/4" BSP
DLE 30-1-2 (-GG):	Inlet / Outlet: 1/4" BSP
Maximum operating temperature:	100°C
Net weight:	21.4 kg

Pressure and flow performances, please see enclosed graph.

Materials of construction hp section DLE 30-1-2:

Standard seal package:	PTFE, FKM
Compressor head:	1.4404
HP cylinder:	1.4542
HP piston:	1.4305
Fittings:	1.4404
Balls:	1.4034
Springs:	1.4310

Approximate Dimensions:

A:	616 mm
B:	181 mm
C:	233 mm

Available Options:

Inert gas service (standard):	DLE 30-1-2 (-GG)
Oxygen service:	DLE 30-1-2-GG-S
CO ₂ service:	DLE 30-1-2-GG-C
In-/Outlet: 9/16-18 UNF	DLE 30-1-2-UU
In-/Outlet: 1/4" NPT	DLE 30-1-2-NN

Available Accessories:

Air control units with filter pressure regulator, control pressure gauge and shut off valve:	DLE 30-1-2 with C2
To protect the booster against excessive outlet pressures or to limit the outlet pressure, a safety valve can be fitted to the air control unit in the air drive line.	DLE 30-1-2 with C2 / SV-air (The required outlet pressure has to be indicated.)

Please consult factory for more information. All technical and dimensional information subject to change. All General Terms and Conditions of sale, including limitations of our liability, apply to all products and services sold.

